



IN-SITU

Wireless TROLL Com/Wireless Rugged TROLL Com



Use the Wireless TROLL Com to connect an In-Situ instrument to a Bluetooth-enabled mobile device and the VuSitu mobile app.

1 USB connection

Plug your Wireless TROLL Com into a PC for charging or setup.

2 Dust cover for USB connection

6 Connection status indicator



Flashing red = The Wireless TROLL Com, instrument, and Bluetooth-enabled device are not connected.



Continuous red = The Wireless TROLL Com is connected to an instrument, but not connected to a Bluetooth-enabled mobile device.



Flashing green = The Wireless TROLL Com is connected to the Bluetooth-enabled device, but is not connected to an instrument.

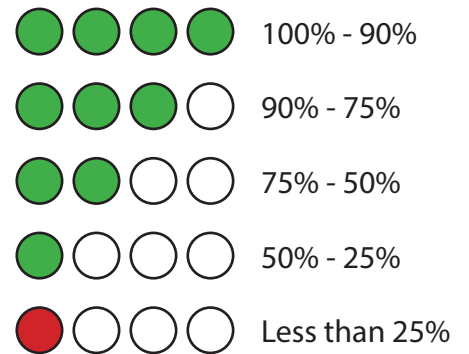


Continuous green = The Wireless TROLL Com, instrument, and Bluetooth-enabled device are connected.

3 On/Off button

Press the button once to turn the device on or off.

4 Battery charge status indicator



5 Cable connector

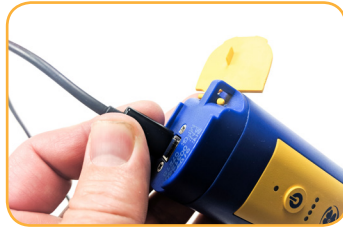


Wireless Rugged TROLL Com

Charging the Wireless TROLL Com



Open the dust cover at the top of the Wireless TROLL Com.



Connect the USB cable to the device.



Plug the USB cable into the wall charger or a powered USB port such as a computer that has a charger plugged in.



The device lights will turn on and blink according to charge level.

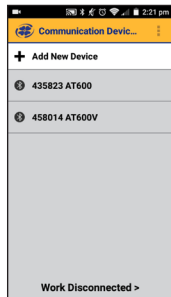


A fully-charged communication device will run for up to 40-50 continuous hours. Avoid full discharges and charge the battery each use. Do not store the Wireless TROLL Com in temperatures above 86 F/30 C.

Connecting a Wireless TROLL Com



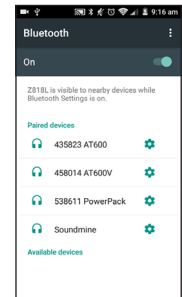
Turn on the Wireless TROLL Com and open VuSitu mobile app.



Select **Add New Device** when connecting for the first time.

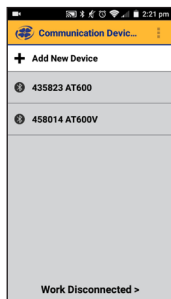


Locate the serial number under the yellow lid on the Wireless TROLL Com.

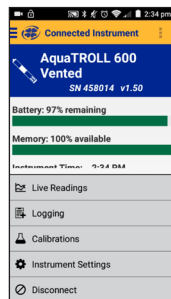


From device's Bluetooth Settings screen, tap serial number of Wireless TROLL COM and then tap the device's back button.

Select **Choose or Add a Device**.

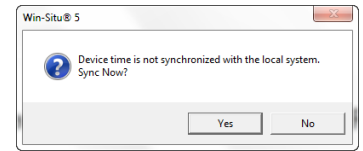
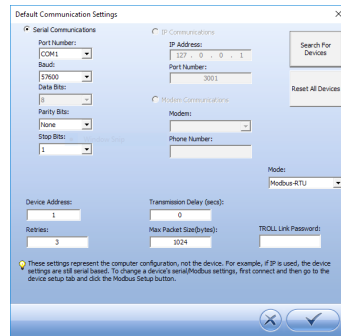
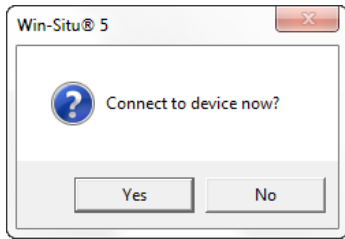


Tap the serial number from list.



VuSitu will display the Connected Instrument screen.

Connecting to Win-Situ 5



Open Win-Situ. Select No when asked "Connect to device now?"

Choose Preferences > Com Settings from menu bar. Select Serial Communications radio button and then choose the correct Com Port. Click check mark button.

Click yellow connect button at bottom right of screen.

Click **Yes** if prompted to sync device time with local system, or if prompted to update firmware.

Default communication settings



The following default communication settings are most common for In-Situ instruments:

- Baud: 19200
- Data bits: 8
- Parity bits: Even
- Stop Bits: 1
- Device Address: 1
- Mode: Modbus-RTU

Specifications

Operating temperature	-5 to 50° C (23 to 122° F); 95% relative humidity, non-condensing
Storage temperature	-20 to 50° C (-4 to 122° F); 95% relative humidity, non-condensing
Dimensions	16 x 4.3 x 3 cm (6.3 x 1.7 x 1.2 in.)
Weight	165 g (0.36 lb)
Materials	PC / ABS blend, Silicon, Urethane, Stainless steel, Brass, Santoprene, Poron®, Polyethylene, Versapor®, Titanium, PEEK, Viton®
Environmental rating	IP67
Output options	Bluetooth®, USB
Communication protocol	Android®: SPP Windows®: SPP or USB
Battery type	3.6 V 10400 mAh Lithium rechargeable cell (UBBL39-FL)
Charging requirements	5 VDC USB charger (1 A or 500 mA)
Warranty	1 year
Certifications	CE, FCC (SSSBC127-X), WEEE

Sensor	Temperature	Barometric pressure
Accuracy	±2° C max	±3 mbar max
Range	-20 to 70° C (-4 to 158° F)	300 to 1100 mbar
Resolution	0.1° C	0.01 mbar
Sensor type	Fixed	Fixed
Response time	< 30 seconds	Instantaneous in thermal equilibrium
Units of measure	Celsius or Fahrenheit	psi, kPa, bar, mbar, mmHg, inHg, Torr, atm
Method	EPA 170.1	Piezoresistive