



SOLINST® LEVELLOGGER SERIES

Levellogger® 5



Levellogger® 5

Model 3001

The Levellogger 5 records highly accurate groundwater and surface water level and temperature measurements. It combines a pressure sensor, temperature detector, 10-year lithium battery, and datalogger, sealed within a 22 mm x 160 mm (7/8" x 6.3") stainless steel housing with a corrosion-resistant coating baked-on using polymerization technology.

The Levellogger 5 measures absolute pressure using a Hastelloy® pressure sensor, offering high resolution and an accuracy of 0.05% FS. Readings are stable in extreme pressure and temperature conditions. The Hastelloy sensor can withstand 2 times over-pressure without permanent damage. Combined with the durable coating inside and out, the Levellogger 5 has high corrosion and abrasion resistance in harsh environments.

The Levellogger 5 uses a Faraday cage design, which protects against power surges or electrical spikes caused by lightning. Its durable maintenance-free design, high accuracy and stability, make the Levellogger 5 the most reliable instrument for long-term, continuous water level recording.

Applications

- Aquifer characterization: pumping tests, slug tests, etc.
- Watershed, drainage basin and recharge monitoring
- Stream gauging, lake and reservoir management
- Harbour and tidal fluctuation measurement
- Wetlands and stormwater run-off monitoring
- Water supply and tank level measurement
- Mine water and landfill leachate management
- Long-term water level monitoring in wells, surface water bodies and seawater environments



Fast communication and downloading speeds
with a high speed Field Reader 5



Upgraded Features

- Increased stability for communication: single-eye optical interface—easier to clean, more scratch resistant
- Increased memory: 150,000 sets of data
- Stronger, more robust design: double o-ring seals for increased leakage protection
- Better thermistor sensitivity: upgraded platinum RTD
- Superior protection in harsh environments: corrosion and abrasion resistant coating—inside and out
- Enhanced Levellogger Software: improved Diagnostic Utility for more proactive user “self-tests”



Single-eye
optical interface

The Levellogger 5 features a smooth, single-eye optical interface, which allows for easy cleaning and more reliable, faster communication. Using a Solinst USB device, including the new Field Reader 5, and Levellogger PC Software, programming and data downloading speeds are 57,600 bps.

Flexible Communication

Levellogger Software is streamlined, making it easy to program dataloggers, and view and compensate data in the office or the field. Data compensation is made simple; multiple data files can be barometrically compensated at once.

The Levellogger 5 App Interface on your in-field Levelloggers creates a *Bluetooth®* connection between your dataloggers and the Solinst Levellogger App on your smart device. Also an option, the DataGrabber 5 is a field-ready USB data transfer unit.

Remote monitoring options include the LevelSender 5, a simple and compact device that fits right in a 2" well, STS 5 Telemetry Systems, and the RRL 5 Remote Radio Link. In addition, Levellogger 5 Series dataloggers are SDI-12 compatible.

Levellogger Setup

Programming Levelloggers is extremely intuitive. Simply connect to a PC using an Optical Reader (Desktop Reader 5 or Field Reader 5) or PC Interface Cable. Use a single screen to fill in your project information and sampling regime. Templates of settings can be saved for easy re-use.

The Levellogger time may be synchronized to the computer clock. There are options for immediate start or future start and stop times. The percentage battery life remaining and the amount of free memory are indicated on the settings screen.

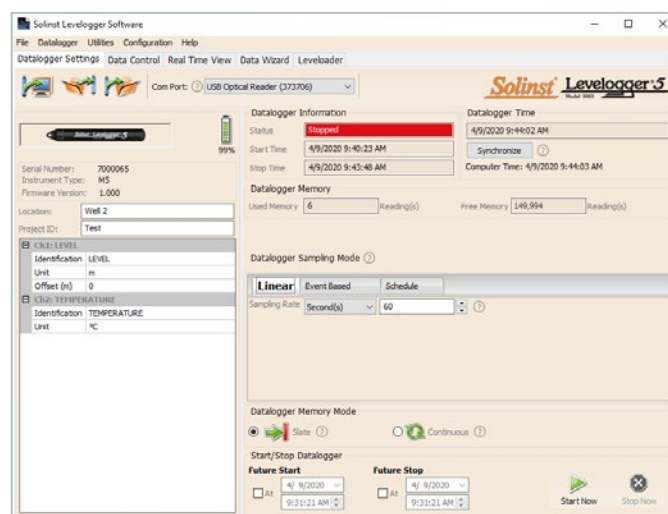
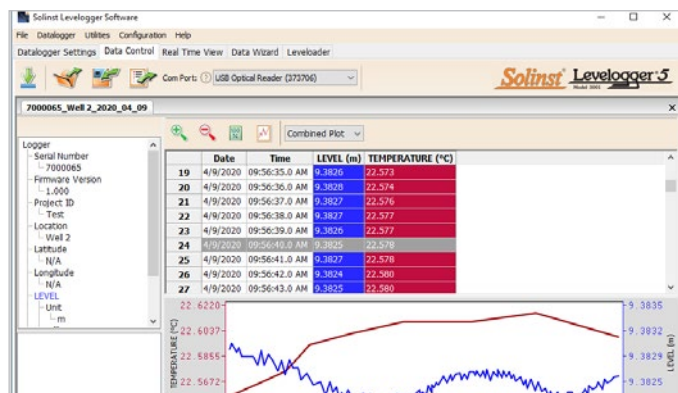
Levelloggers can also be programmed with a sampling regime and start/stop times using the Solinst Levellogger App on your smart device.

Convenient Sampling Options

Levelloggers can be programmed with linear, event-based, or a user-selectable sampling schedule. Linear sampling can be set from 1/8 second to 99 hours.

Event-based sampling can be set to record when the level changes by a selected threshold. Readings are checked at the selected time interval, but only recorded in memory if the condition has been met. A default reading is taken every 24 hours if no “event” occurs.

The Schedule option allows up to 30 schedule items, each with its own sampling rate and duration. For convenience, there is an option to automatically repeat the schedule.



Data Download, Viewing and Export

Data is downloaded to a PC with the click of a screen icon. There are multiple options for downloading data, including ‘Append Data’ and ‘All Data’. The software also allows immediate viewing of the data in graph or table format using ‘Real Time View’.

Level data is automatically compensated for temperature; the temperature data is also downloaded. Barometric compensation of Levellogger data is performed using the Data Wizard, which can also be used to input manual data adjustments, elevation, offsets, density, and adjust for Barometric efficiency. The Levellogger Software allows easy export of the data into a spreadsheet or database for further processing.

The Solinst Levellogger App also allows you to view and save real-time or logged data right on your smart device.

Helpful Utilities

The Diagnostic Utility can be used in case of an unexpected problem. It checks the functioning of the program, calibration, backup and logging memories, the pressure transducer, temperature sensor and battery voltage, as well as enabling a complete Memory Dump, if required. A firmware upgrade will be available from time to time, to allow upgrading of the Levellogger 5, as new features are added.

Levellogger 5 App Interface

The Levellogger 5 App Interface uses Bluetooth® technology to connect your Levellogger to your smart device. With the Solinst Levellogger App, you can download data, view real-time data, and program your Levelloggers. Data can be e-mailed from your smart device directly to your office (see Model 3001 Levellogger 5 App Interface data sheets).



Standard Cable Deployment

Levelloggers may be suspended on a stainless steel wireline or Kevlar® cord. This is a very inexpensive method of deployment, and if in a well, allows the Levellogger to be easily locked out of sight and inaccessible. Solinst offers wireline and cord assemblies in a variety of lengths.

Solinst 3001 Well Cap Assembly

The 2" Locking Well Caps are designed for both standard and Direct Read Cable deployment options.

The well cap has a convenient eyelet for suspending Levelloggers using wireline or Kevlar cord. The Well Cap insert has two openings to accommodate direct read cables for both a Levellogger and Barologger. Adaptors are available to fit 4" wells.

The cap is vented to equalize atmospheric pressure in the well. It slips over the casing, and can be secured using a lock with a 9.5 mm (3/8") shackle diameter.



*Levellogger 2" Locking Well Cap Installations
(see Well Caps data sheet for more details)*

L5 Direct Read Cables

When it is desired to get real-time data and communicate with Levelloggers without removal from the water, they can be deployed using L5 Direct Read Cables. This allows viewing of the data, downloading and/or programming in the field using a portable PC, DataGrabber 5, or the Solinst Levellogger 5 App Interface.

Levelloggers can be connected to an SDI-12 datalogger using the Solinst SDI-12 Interface Cable attached to a L5 Direct Read Cable.

Cable Specifications

L5 Direct Read Cables are available for attachment to any Levellogger in lengths up to 1500 ft. The 3.175 mm dia. (1/8") coaxial cable has an outer polyurethane jacket for strength and durability. The stranded stainless steel conductor gives non-stretch accuracy.

*Barologger 5 and Levellogger 5
installed in Well Using
L5 Direct Read Cables*



Accurate Barometric Compensation

Levelloggers measure absolute pressure (water pressure + atmospheric pressure) expressed in feet, meters, centimeters, psi, kPa, or bar.

The most accurate method of obtaining changes in water level is to compensate for atmospheric pressure fluctuations using a Barologger 5, avoiding time lag in the compensation.

The Barologger 5 is set above high water level in one location on site. One Barologger can be used to compensate all Levelloggers in a 30 km (20 mile) radius and/or with every 300 m (1000 ft.) change in elevation.

The Levellogger Software Data Compensation Wizard automatically produces compensated data files using the synchronized data files from the Barologger and Levelloggers on site.

The Barologger 5 uses pressure algorithms based on air rather than water pressure, giving superior accuracy.

The recorded barometric information can also be very useful to help determine barometric lag and/or barometric efficiency of the monitored aquifer.

The Barologger 5 records atmospheric pressure in psi, kPa, or mbar. When compensating submerged Levellogger 5, Edge, Gold or Junior data, Levellogger Software can recognize the type of Levellogger and compensate using the same units found in the submerged data file (e.g. feet or meters). This makes the Barologger 5 backwards compatible.

*Synchronize and Simplify
Barometric Compensation
Across Entire Site*



Levellogger 5 Specifications

Level Sensor:	Piezoresistive Silicon with Hastelloy Sensor
Accuracy:	± 0.05% FS (Barologger 5: ± 0.05 kPa)
Stability of Readings:	Superior, low noise
Resolution:	0.002% FS to 0.0006% FS
Units of Measure:	m, cm, ft., psi, kPa, bar, °C, °F (Barologger 5: psi, kPa, mbar, °C, °F)
Normalization:	Automatic Temperature Compensation
Temp. Comp. Range:	0° to 50°C (Barologger 5: -10 to +50°C)
Temperature Sensor:	Platinum Resistance Temperature Detector (RTD)
Temp. Sensor Accuracy:	± 0.05°C
Temp. Sensor Resolution:	0.003°C
Battery Life:	10 Years – based on 1 reading/minute
Clock Accuracy (typical):	± 1 minute/year (-20°C to 80°C)
Operating Temperature:	-20°C to 80°C
Maximum # Readings:	150,000 sets of readings
Memory Mode:	Slate and Continuous
Communication:	Optical high-speed: USB, SDI-12 57,600 bps with USB
Size:	22 mm x 160 mm (7/8" x 6.3")
Weight:	166 grams (5.9 oz)
Corrosion Resistance:	Baked-on coating using polymerization technology (inside and out)
Other Wetted Materials:	Delrin®, Viton®, 316L stainless steel, Hastelloy, PFAS-free PTFE coating
Sampling Modes:	Linear, Event & User-Selectable with Repeat Mode, Future Start, Future Stop, Real-Time View
Measurement Rates:	1/8 sec to 99 hrs
Barometric Compensation:	Software Wizard and one Barologger 5 in local area (approx. 30 km/20 miles radius)

Models	Full Scale (FS)	Accuracy	Resolution
Barologger	Air only	± 0.05 kPa	0.002% FS
M5	5 m (16.4 ft.)	± 0.3 cm (0.010 ft.)	0.001% FS
M10	10 m (32.8 ft.)	± 0.5 cm (0.016 ft.)	0.0006% FS
M20	20 m (65.6 ft.)	± 1 cm (0.032 ft.)	0.0006% FS
M30	30 m (98.4 ft.)	± 1.5 cm (0.064 ft.)	0.0006% FS
M100	100 m (328.1 ft.)	± 5 cm (0.164 ft.)	0.0006% FS
M200	200 m (656.2 ft.)	± 10 cm (0.328 ft.)	0.0006% FS

Low Cost Datalogging: See Levellogger 5 Junior data sheet.
Vented Dataloggers: See LevelVent 5 & AquaVent 5 data sheets.
Conductivity Datalogging: See Levellogger 5 LTC data sheet.

DataGrabber 5

The DataGrabber 5 is a field-ready data transfer device that allows you to copy data from a Levellogger onto a USB flash key (Dual USB & USB-C key provided).

The DataGrabber 5 is compact and very easy to transport. It connects to the top end of a Levellogger's Direct Read Cable, or Slip Fit and Threaded Adaptors are available to allow direct connection to a Levellogger.

One push-button is used to download all of the data in a Levellogger's memory to a USB device. A convenient LED light indicates the operation of the DataGrabber 5. The data in the Levellogger memory is not erased, and logging is not interrupted if the Levellogger is still running. The DataGrabber 5 uses its own replaceable 9V battery.



LevelSender 5 Telemetry

The LevelSender 5 is a simple, low cost telemetry system designed to send data from Levelloggers in the field, to your smart device and PC database via cellular communication.

Initial set up is done through a user-friendly software wizard at the Home Station. There is two-way communication between the LevelSender 5 and Home Station, allowing remote updates.

Each LevelSender 5 device has a single port to connect one Levellogger with an optional splitter that allows the connection of two. A built-in barometer allows barometric compensation of water level data.

LevelSender 5 stations are compact in design, which allows them to be discreetly installed inside a 2" (50 mm) well (see Model 9500 data sheet).



STS 5 Telemetry

STS 5 Telemetry provides an efficient method to send Levellogger data from the field to your desktop. Cellular communication options give the flexibility to suit any project. STS Systems are designed to save costs by enabling the self-management of data. Alarm notification, remote firmware upgrades and diagnostic reporting make system maintenance simple (see Model 9100 data sheet).



RRL 5 Remote Radio Link

The RRL 5 Remote Radio Link is ideal for closed-loop, short range applications up to 30 km (20 miles). The RRL 5 can be linked to an STS 5 telemetry station to change from a closed-loop telemetry system to one which can be accessed from anywhere through internet connectivity. (see Model 9200 data sheet).